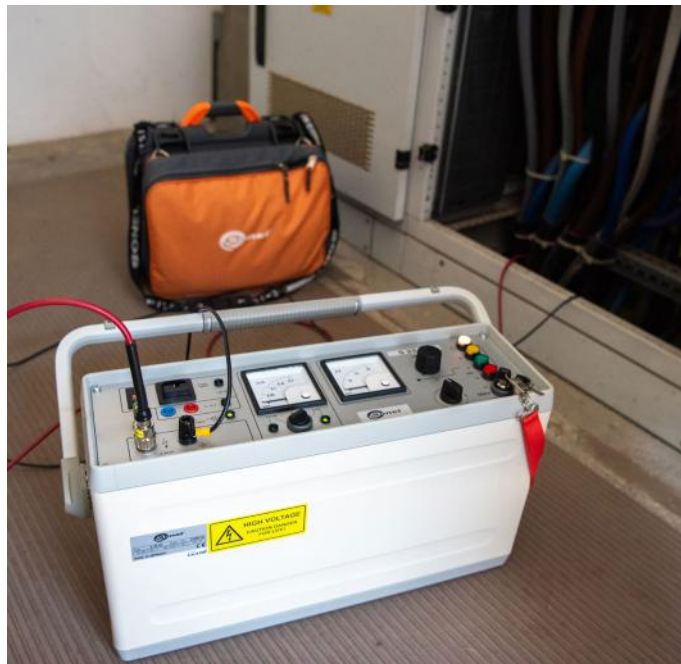




S DC series High Voltage Insulation Testers
HV insulation under full control

Features

- Easy operation
- Robust construction, low weight
- Integrated timer:
 - max. 30 min for S-25 DC (standard)
 - max. 60 min for S-50 / 80 / 110 / 120 DC (option)
- Discharge device:
 - integrated (S-25 DC),
 - external ground-discharge rod (S-50 / 80 / 110 / 120 DC)
- Internal battery charger with deep discharge protection (S-25 DC)
- Voltage measurement direct at HV output
- Short-circuit-proof output:
 - electronically limited output current (S-25 DC)
 - protection by overcurrent tripping (S-50 / 80 / 110 / 120 DC)
- Protective ground connection
- Mains-independent by internal rechargeable battery (S-25 DC)



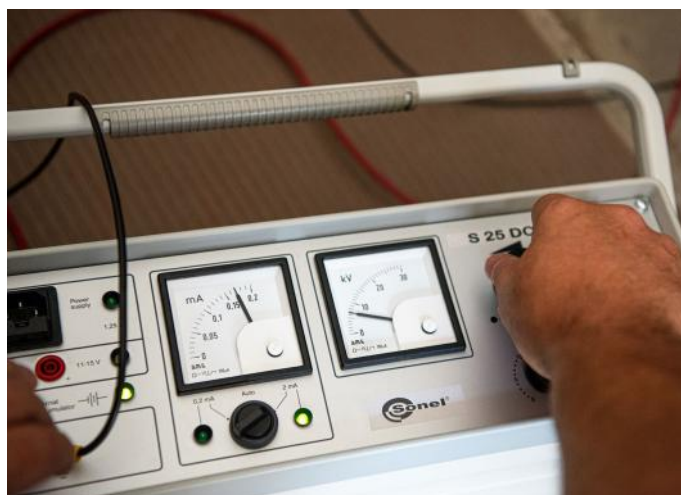
Overview

The S-xx DC series devices are universal high voltage testers. They are extremely robust, but also lightweight, compact and easily portable thanks to a transport case on wheels (only for S-50 / 80 / 110 / 120 DC).

Capacitive loads, such as shielded power cables, will be properly and automatically discharged in case of an error or at the end of testing time by the integrated discharge device.

Key switch, switch-on interlock and a protective ground circuit ensure maximum safety.

S-25 DC stands out in particular. Not just with modest dimensions. Thanks to an internal rechargeable battery it enables mains-independent testing.



Fields of application

- Testing at recommissioning of cable systems after maintenance and repair
- Testing of newly installed cables and cable joints before commissioning
- Voltage testing at cable sheath (S-25 DC)
- Regular preventive cable testing (S-50 DC / 80 DC / 110 DC / 120 DC)
- Testing of electrical equipment



Technical specification

	S-25 DC	S-50 DC	S-80 DC	S-110 DC	S-120 DC
Index	WMXXS25DC	WMXXS50DC	WMXXS80DC	WMXXS110DC	WMXXS120DC
Power supply	<ul style="list-style-type: none"> • internal rechargeable battery • mains, switchable 115 / 230 V, 50-60 Hz • external DC voltage source 11...15 V DC 		mains 230 V / 50 Hz (optional: 115 V / 60 Hz)		
Power consumption	max. 120 VA		max. 900 VA		
Output voltage	<ul style="list-style-type: none"> • 0...25 kV DC • infinitely adjustable • negative polarity • ripple < 0,25% 	<ul style="list-style-type: none"> • 0...50 kV DC • infinitely adjustable • negative polarity 	<ul style="list-style-type: none"> • 0...80 kV DC • infinitely adjustable • negative polarity 	<ul style="list-style-type: none"> • 0...110 kV DC • infinitely adjustable • negative polarity 	<ul style="list-style-type: none"> • 0...120 kV DC • infinitely adjustable • negative polarity
Rated output current at max. output voltage	1.5 mA electronically limited	6 mA	5 mA	4 mA	3.5 mA
Battery operation at full load	45 min			-	
Discharge - integrated automatic discharge device	3000 J 9.6 µF at 25 kV	7500 J 6 µF at 50 kV	12 250 J 4 µF at 75 kV 3.5 µF at 80 kV	15 000 J 3 µF at 100 kV 2.5 µF at 110 kV	18 750 J 2.4 µF at 125 kV 2.6 µF at 120 kV
Voltage measuring range	0...30 kV	0...50 kV	0...80 kV	0...110 kV	0...130 kV
Current measuring ranges	0...200 µA / 0...2 mA manual or automatic switching between ranges		0...100 µA / 1 mA / 10 mA manual switching between ranges		
Operating temperature	-25...+55°C				
Storage temperature	-40...+70°C				
Weight	Operating unit	13.5 kg		13 kg	
	High voltage unit	-	17 kg	18.5 kg	20 kg
Dimensions	Operating unit	473 x 152 x 275 mm		370 x 200 x 280 mm	
	High voltage unit	-	210 x 380 x 310 mm	210 x 400 x 310 mm	210 x 420 x 310 mm

Standard accessories

S-25 DC



Protective bag



Power cable



Connection cables for external DC power supply



Protective ground cable, 3 m



Operation ground cable, 3 m



High voltage connecting cable (shielded), 3 m



Service pack



Start keys



User manual

S-50 DC / S-80 DC / S-110 DC / S-120 DC



Protective bag



Discharge rod



Protective ground cable, 3 m



Operation ground cable, 3 m



High voltage connecting cable, 2 m



Service pack



Start keys



User manual

Optional accessories



Transport case

