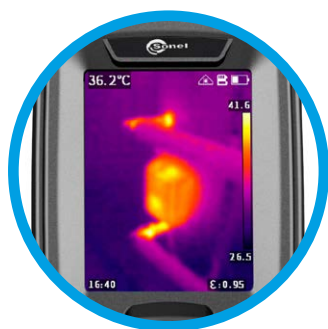




Thermal Imager KT-256F-PRO / 256-PRO / 128-PRO

index: WMGBKT256FPRO / WMGBKT256PRO / WMGBKT128PRO



2.4" display

Clear temperature reading



Large buttons

Conveniently located
for flawless control



KT-256F-PRO

Autofocus trigger

Sharp image
with a single
press

Trigger

Temperature
measurement
with a single
press



KT-128-PRO • KT-256-PRO

Trigger

Temperature measurement
with a single press

Feel safe with thermography

Simple thermography

KT-128-PRO / 256-PRO / 256F-PRO is a special camera. Economical, practical and handy, it is a powerful tool in everyday work.

The camera is used for basic diagnostics. It is equipped with a matrix having a resolution of:

- » **KT-128-PRO** | 120 x 90 pixels,
 - » **KT-256-PRO • KT-256F-PRO** | 256 x 192 pixels,
- supported by visual camera, laser pointer and additional features to fully meet the needs of users.

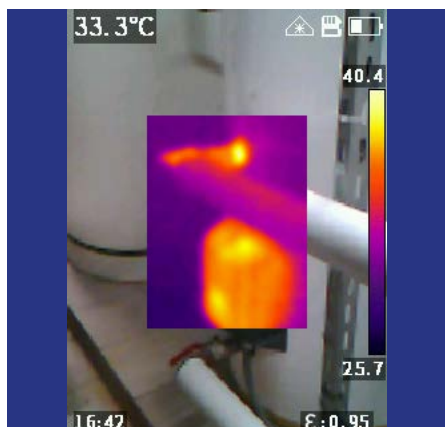
KT-256F-PRO | Autofocus

KT-256F-PRO is equipped with an automatic focus which ensures that your IR measurement pictures will always be sharp and crisp, no matter the distance.

Application

KT-128-PRO / 256-PRO / 256F-PRO is used always when the temperature of objects is important and may affect the operation of the equipment. Particularly useful in:

- power engineering (including PV installations),
- construction sector,
- industry
- HVAC.



Features

- measuring range: -20°C...550°C (-4°F... 1022°F)
- quick start
- fast temperature measurement
- automatic signalling of exceeded alarm threshold
- **KT-256F-PRO** | autofocus
- saving IR images to internal memory
- built-in Li-Ion battery with:
 - » **KT-128-PRO** | 8-hour working time
 - » **KT-256-PRO • KT-256F-PRO** | 11-hour working time
- interfaces: USB type C
- can be set up on a tripod

Specifications

| | KT-128-PRO | KT-256-PRO | KT-256F-PRO |
|---|--|--|---|
| Detector resolution | 120 x 90 / 17 µm VOx | 256 x 192 / 12 µm VOx | |
| Detector | | 7.5~14 µm | |
| Frame rate | | 25 Hz / 9 Hz | |
| Sensitivity | 60 mK | | 45 mK |
| Focus | | Fixed | Auto |
| Lens (field of vision / focal distance) | 50° x 38°/2.28 mm | 56° x 48°/3.2 mm | 25° x 19°/7 mm |
| Spatial resolution (IFOV) | 7.46 mrad | 3.75 mrad | 1.71 mrad |
| Display | | 2.4" 240 x 320 px LCD | |
| Image mode | | IR / Visual / Infrarufusion MIF / PiP | |
| Temperature range | | Range 1: -20°C...+150°C -4°F...+302°F Range 2: 0°C...+550°C 32°F...1022°F | |
| Accuracy | | ±2°C ±4°F or ±2% of reading (for ambient temperature 15°C...30°C, object temp. ≥0°C) | |
| Image analysis mode | | Point. 3 areas. Temperature indication: min, max. Temp. alarm | |
| Palettes | | 6 | |
| Super-resolution | 2x, 240 x 180 | | 2x, 512 x 384 |
| Emissivity | | Selectable from 0.01 to 1.00 or from the list | |
| Measurement adjustment | | Adjustable distance, ambient temperature (reflected) | |
| Image file format | | JPG | |
| Video file format | | IRGD (including temp. information) | |
| Built-in features | | Visual camera 2 MPix, LED flashlight, laser pointer | |
| Wireless communication | - | | Wi-Fi |
| Storage | | Built-in memory (16 GB) | |
| Interfaces | | USB type C, tripod | |
| Power supply | Li-Ion battery (operating time >8 hours), built-in charger (charging time <2.5 hour), AC adapter 100-240 V, 50/60 Hz | | Li-Ion battery (operating time >11 hours), built-in charger (charging time <2.5 hour), AC adapter 100-240 V, 50/60 Hz |
| Operating temperature | | -15°C...+50°C 5°F...122°F | |
| Storage temperature | | -40°C...+70°C -40°F...+158°F | |
| Housing | | IP54 | |
| Weight | ca. 0.36 kg 0.79 lbs | | ca. 0.38 kg 0.84 lbs |

Standard accessories

| | KT-128-PRO | KT-256-PRO | KT-256F-PRO |
|-------------------------------|------------|------------|-------------|
| USB charger WAZASZ20 | ✓ | ✓ | ✓ |
| Type C USB cable WAPRZUSBC | ✓ | ✓ | ✓ |
| Wristband WAP0ZPAS1 | ✓ | ✓ | ✓ |
| Declaration of verification | ✓ | ✓ | ✓ |

Optional accessories

| |
|--|
| S-1 carrying case WAFUTS1 |
| Calibration certificate with accreditation |

